



# CILogon and OAuth for MyProxy: Federated Authentication to Globus Online and Beyond

**Jim Basney**  
[jbasney@illinois.edu](mailto:jbasney@illinois.edu)

This material is based upon work supported by the National Science Foundation under grant number 0943633 and by the Department of Energy under award number DE-SC0008597. Any opinions, findings, and conclusions or recommendations expressed in this material are those of the authors and do not necessarily reflect the views of the United States Government or any agency thereof.

# Outline

- Campus authentication to Globus Online via CILogon
- Globus Online endpoint activation via OAuth for MyProxy
- Getting X.509 certificates directly from CILogon



## Sign In

Sign Up with Globus Online

Use Your GlobusOnline login



alternate login

Username   
Password

Sign In

Forgot Password?

Select a different login

GlobusOnline	InCommon / CILogon
ARCS	LRZ
Argonne LCF	NCSA
Argonne MCS & LCRC	NCSA Blue Waters
BIRN	NERSC
CLI Transition	UChicago CI
EGI	UChicago iBi
ESG ANL	UK NGS
Exeter	WestGrid
Google	XSEDE

Support

MANAGE DATA  
start transfer  
view transfer activity  
manage endpoints  
dashboard

case studies  
papers

pro tips  
videos & presentations

Subscribe to Globus  
News & Updates

Email Address (Required)

## Sign In

Use Your InCommon / CILogon login

[alternate login](#)

You will now be redirected to InCommon / CILogon's authentication page.



Support

### MANAGE DATA

[start transfer](#)  
[view transfer activity](#)  
[manage endpoints](#)  
[dashboard](#)

### OUR USERS

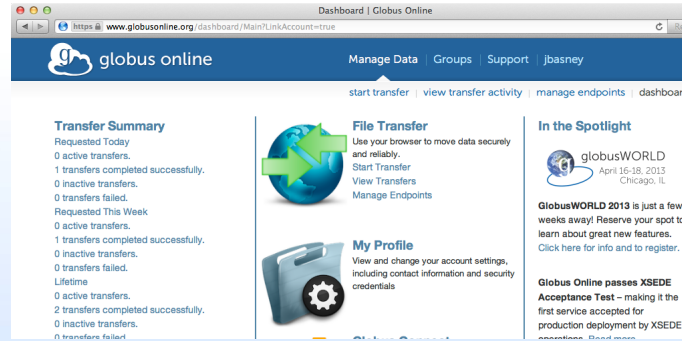
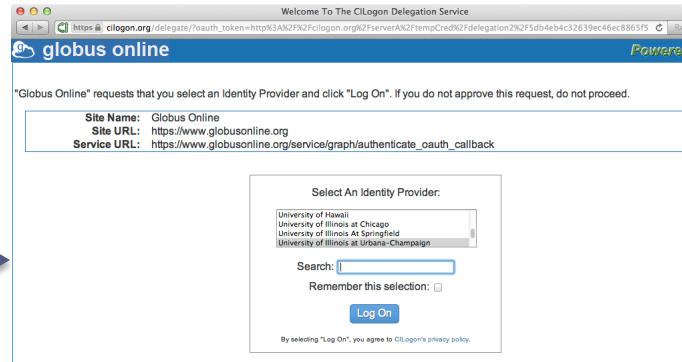
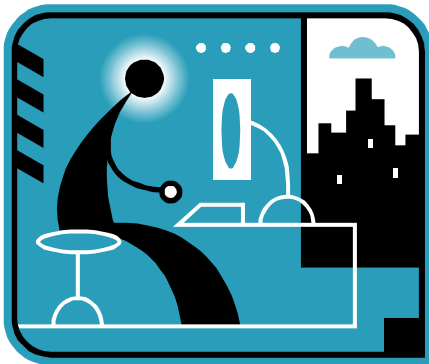
[user stories](#)  
[user quotes & stats](#)  
[case studies](#)  
[papers](#)

### HOW TO

[quick start guides](#)  
[tutorials](#)  
[pro tips](#)  
[videos & presentations](#)

Subscribe to Globus  
News & Updates

Email Address (Required)



Show Help

"Globus Online" requests that you select an Identity Provider and click "Log On". If you do not approve this request, do not proceed.


**Site Name:** Globus Online  
**Site URL:** https://www.globusonline.org  
**Service URL:** https://www.globusonline.org/service/graph/authenticate\_oauth\_callback

Select An Identity Provider:

- University of Hawaii
- University of Illinois at Chicago
- University of Illinois At Springfield
- University of Illinois at Urbana-Champaign

Search:

Remember this selection:



By selecting "Log On", you agree to CILogon's privacy policy.

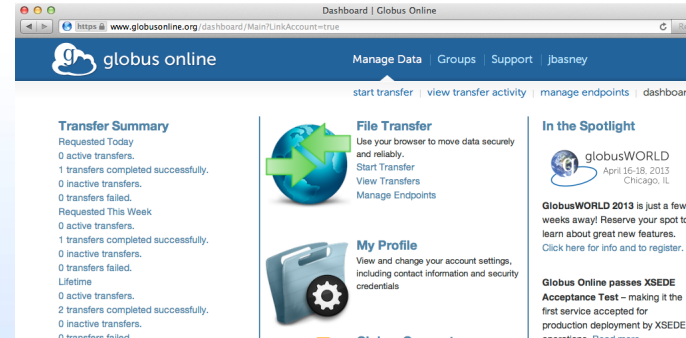
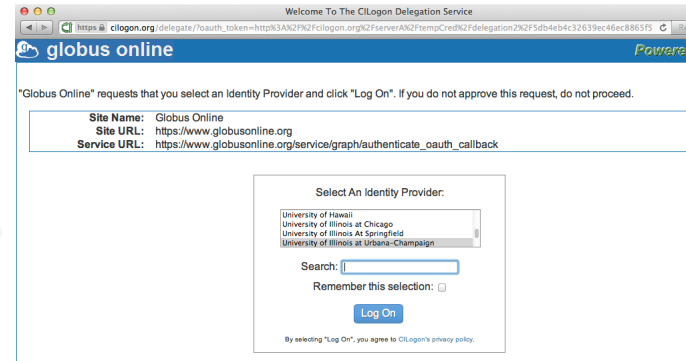
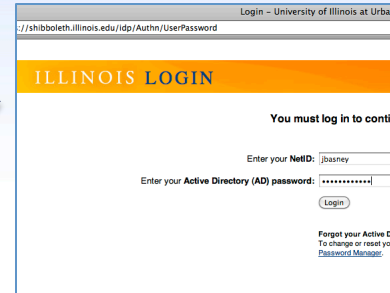
For questions about this site, please see the [FAQs](#) or send email to [help@cilogon.org](mailto:help@cilogon.org).  
Know [your responsibilities](#) for using the CILogon Service.  
See [acknowledgements](#) of support for this site.







SAML



## ILLINOIS LOGIN



You must log in to continue.

Enter your NetID:

Enter your Active Directory (AD) password:



**Forgot your Active Directory password?**

To change or reset your Active Directory password, go to the [CITES Password Manager](#).

## More Information

### Where to Get Help

Contact the [CITES Help Desk](#) at [consult@illinois.edu](mailto:consult@illinois.edu).

### What is a NetID?

Your NetID serves as your login to many University computing and networking services and also determines your University email address, which is [netid@illinois.edu](mailto:netid@illinois.edu).

For more information, see the [Your Network ID \(NetID\)](#) page.

## Technical Information

Service that has requested authentication:

**Service Provider EntityID:**  
<https://cilogon.org/shibboleth>

This login service uses the following server:

**shibboleth.illinois.edu**

This page's URL should start with <https://> followed by the server listed above.

For most web browsers, the security padlock icon for this page should be closed/locked.

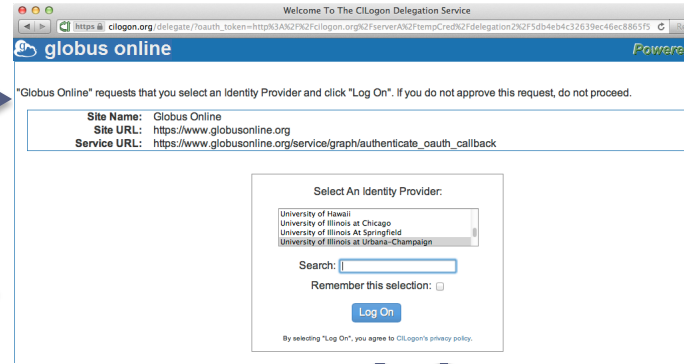
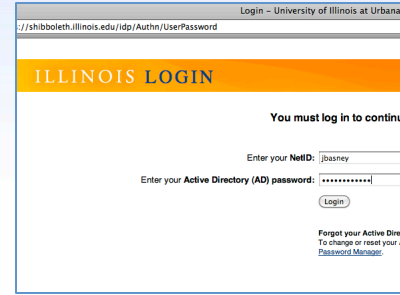
To maximize security, quit your browser when done using this application.





SAML

OAuth





### Transfer Summary

Requested Today  
 0 active transfers.  
 1 transfers completed successfully.  
 0 inactive transfers.  
 0 transfers failed.

Requested This Week  
 0 active transfers.  
 1 transfers completed successfully.  
 0 inactive transfers.  
 0 transfers failed.

Lifetime  
 0 active transfers.  
 2 transfers completed successfully.  
 0 inactive transfers.  
 0 transfers failed.



### File Transfer

Use your browser to move data securely and reliably.  
[Start Transfer](#)  
[View Transfers](#)  
[Manage Endpoints](#)



### My Profile

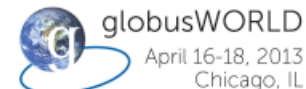
View and change your account settings, including contact information and security credentials



### Globus Connect

Use Globus Connect to transfer files between your computer and any Globus Online endpoint.

### In the Spotlight



**GlobusWORLD 2013** is just a few weeks away! Reserve your spot to learn about great new features.  
[Click here for info and to register.](#)

**Globus Online passes XSEDE Acceptance Test** – making it the first service accepted for production deployment by XSEDE operations. [Read more...](#)

**Announcing Sharing:** Our new sharing service makes it simple for researchers to collaborate securely. [Read more...](#)

Support

#### MANAGE DATA

[start transfer](#)  
[view transfer activity](#)  
[manage endpoints](#)  
[dashboard](#)

#### OUR USERS

[user stories](#)  
[user quotes & stats](#)  
[case studies](#)

#### RESOURCES

[documentation](#)  
[API](#)  
[release notes](#)  
[downloads](#)


Subscribe to Globus News & Updates

Email Address (Required)

[update profile](#) | [change password](#) | [account privacy](#) | [group membership](#) | [manage identities](#) | [log out](#)

## Manage Identities

[Add External Identity](#) <sup>i</sup> [Add X.509 Certificate](#) <sup>i</sup> [Add SSH Public Key](#) <sup>i</sup>

Alias	Type	Authentication Provider			
	x509		<a href="#">View Details</a>	<a href="#">Update</a>	<a href="#">Delete</a>
 <a href="#">InCommon / CILogon Sign In</a>	oauth		<a href="#">View Details</a>	<a href="#">Update</a>	<a href="#">Delete</a>
NCSA Blue Waters	oauth		<a href="#">View Details</a>	<a href="#">Update</a>	<a href="#">Delete</a>
XSEDE Sign In	oauth		<a href="#">View Details</a>	<a href="#">Update</a>	<a href="#">Delete</a>

[Add External Identity](#) <sup>i</sup> [Add X.509 Certificate](#) <sup>i</sup> [Add SSH Public Key](#) <sup>i</sup>

Support

### MANAGE DATA

[start transfer](#)  
[view transfer activity](#)  
[manage endpoints](#)  
[dashboard](#)

### OUR USERS

[user stories](#)  
[user quotes & stats](#)  
[case studies](#)  
[papers](#)

### RESOURCES

[documentation](#)  
[API](#)  
[release notes](#)  
[downloads](#)

Subscribe to Globus News & Updates

Email Address (Required)

Start Transfer | Transfer | Globus Online

https://www.globusonline.org/xfer/StartTransfer

globus online Manage Data | Groups | Support | jbasney

start transfer | view transfer activity | manage endpoints | dashboard

## Transfer Files

Get Globus Connect  
Turn your computer into an endpoint.

Endpoint  Go

Path  Go


Endpoint  Go

Path  Go

Please select an endpoint above.

**Activate Endpoint: xsede#stampede**

The administrator of this endpoint, **xsede#stampede**, requires that you authenticate using their MyProxy OAuth server to activate the endpoint. When you click 'Continue' you will be redirected to their website.

 **Continue** Cancel

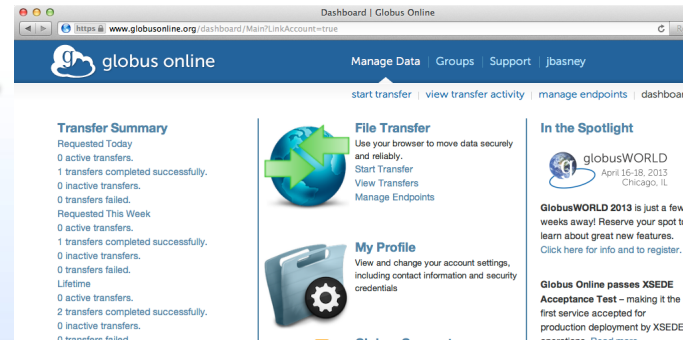
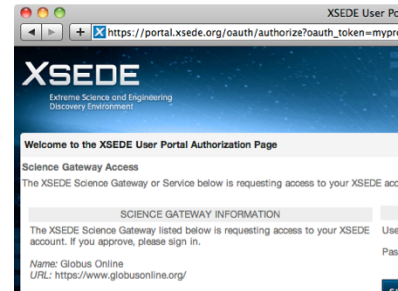
more options

Label This Transfer

This will be displayed in your transfer activity.

Support

MANAGE DATA OUR USERS RESOURCES





Extreme Science and Engineering  
Discovery Environment

### Welcome to the XSEDE User Portal Authorization Page

#### Science Gateway Access

The XSEDE Science Gateway or Service below is requesting access to your XSEDE account. If you approve, please sign in with your XSEDE username and password.

**Note:** Only members of active XSEDE project allocations will be able to sign in on this page.

#### SCIENCE GATEWAY INFORMATION

The XSEDE Science Gateway listed below is requesting access to your XSEDE account. If you approve, please sign in.

Name: Globus Online

URL: <https://www.globusonline.org/>

#### SIGN IN

Username

Password



SIGN IN

CANCEL

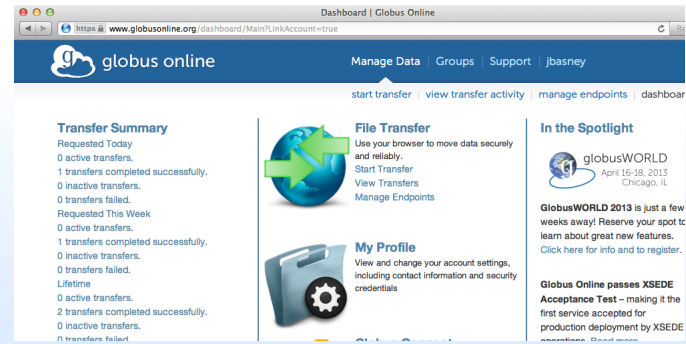
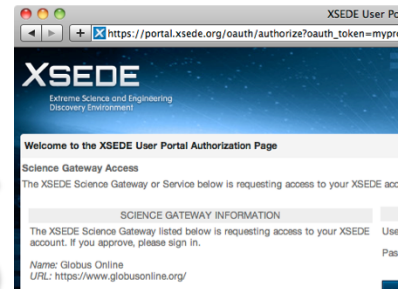
Please send any questions or comments about this site to [help@xsede.org](mailto:help@xsede.org).





# MyProxy

Credential Management Service



Start Transfer | Transfer | Globus Online

https://www.globusonline.org/xfer/StartTransfer?dest=xsede%23stampede

globus online Manage Data | Groups | Support | jbasney

start transfer | view transfer activity | manage endpoints | dashboard

### Transfer Files

Get Globus Connect  
Turn your computer into an endpoint.

Endpoint **xsede#trestles** Go

Path /~/ Go

select all | none | up one folder | refresh list

hello.txt 13 b

Endpoint **xsede#stampede** Go

Path /~/ Go

select all | none | up one folder | refresh list

hello.txt 13 b

more options

Label This Transfer

This will be displayed in your transfer activity.

Support

Get Your Certificate

https://cilogon.org

# CILogon Service

**Certificate Subject:** /DC=org/DC=cilogon/C=US/O=University of Illinois at Urbana-Champaign/CN=James Basney A534  
**Identity Provider:** University of Illinois at Urbana-Champaign  
**Level of Assurance:** Basic


Show Help

Password Protect Your New Certificate:

Enter A Password:

Confirm Password:

**Get New Certificate**

 [» Click Here To Download Your Certificate «](#)

Link Expires: 04m:35s

**Log Off**

For questions about this site, please see the [FAQs](#) or send email to help @ cilogon.org.  
Know your responsibilities for using the CILogon Service.  
See acknowledgements of support for this site.

?

# CILogon CLI

```
$ curl -O https://cilogon.org/ecp.pl
$ perl ecp.pl --get cert -c create -k userkey.pem -o usercert.pem -t 12
Select an Identity Provider (IdP):
 1> LIGO Scientific Collaboration
 2> LTER Network
 3> ProtectNetwork
 4> University of Chicago
 5> University of Illinois at Urbana-Champaign
 6> University of Washington
 7> University of Wisconsin-Madison
 8> Specify the URL of another IdP

Choose [3]: 5
Enter a username for the Identity Provider: jbasney
Enter a password for the Identity Provider: *****
$ grid-proxy-init -cert usercert.pem -key userkey.pem -hours 4
Your identity: /DC=org/DC=cilogon/C=US/O=University of Illinois at Urbana-Champaign/
CN=James Basney A534
Creating proxy ..... Done
Your proxy is valid until: Thu Mar 14 18:26:56 2013
$ gsissh citest.example.edu
[jbasney@citest ~]$
```

# Custom CILogon Instances

Welcome To The CILogon Service

Powered By CILogon

Open Science Grid

LIGO

DataONE

Ocean Observatories Initiative

Powered By CILogon

CardioVascular Research Grid

Select An Identity Provider:

- University of California, Davis
- University of California - Office of the President
- University of California - San Diego
- University of Chicago
- University of Cincinnati Main Campus
- University of Delaware
- University of Hawaii
- University of Illinois at Chicago
- University of Illinois At Springfield
- University of Illinois at Urbana - Champaign

Search:

Remember this selection:

**CONTINUE** **CANCEL**

By selecting "Continue", you agree to [CILogon's privacy policy](#).

For questions about this site, please see the [FAQs](#) or send email to [help@cilogon.org](mailto:help@cilogon.org).  
Know your responsibilities for using the CILogon Service.  
See acknowledgements of support for this site.

# References

- **MyProxy**  
<http://myproxy.ncsa.uiuc.edu/>
- **OAuth for MyProxy**  
<http://www.sciencegatewaysecurity.org/oauth-for-myproxy>
- **CILogon**  
<https://cilogon.org/>
- **Shibboleth**  
<http://shibboleth.net/>
- **InCommon Federation**  
<https://www.incommon.org/federation/>



# Thanks!

[www.cilogon.org](http://www.cilogon.org)  
[www.sciencegatewaysecurity.org](http://www.sciencegatewaysecurity.org)

[jbasney@illinois.edu](mailto:jbasney@illinois.edu)